

# PRAXI Energy Advisory

## Technical Advisory Services in the Energy Sector

**PRAXI**

Bologna | Florence | Genoa | Milan | Naples  
Padua | Rome | Turin | Verona

[www.praxi.praxi](http://www.praxi.praxi)

# Since 1966

**6** | MILLION EUROS OF  
SHARE CAPITAL

**300** | EMPLOYEES

**13** | OFFICES

**12.000** | CLIENTS

**3** | INTERNATIONAL  
NETWORKS

**PRAXI** is a group of leading Italian consulting firms established in 1966 with the foundation of PRAXI S.p.A. Today the organization includes 300 employees in 13 offices throughout Italy, and offers services in the following areas of expertise:

- Management Consulting
- IT Consulting
- Valuations and Advisory
- Human Resources
- Intellectual Property

In-depth consulting experience, attention to value creation and project delivery by consolidated yet diverse working groups has allowed PRAXI to accompany clients over time and create lasting professional alliances.



# PRAXI Energy

PRAXI Energy has gained significant experience over the years through its service offerings in technical advisory on RES plants and energy efficiency analysis on investments amounting to over 3 billion Euros.

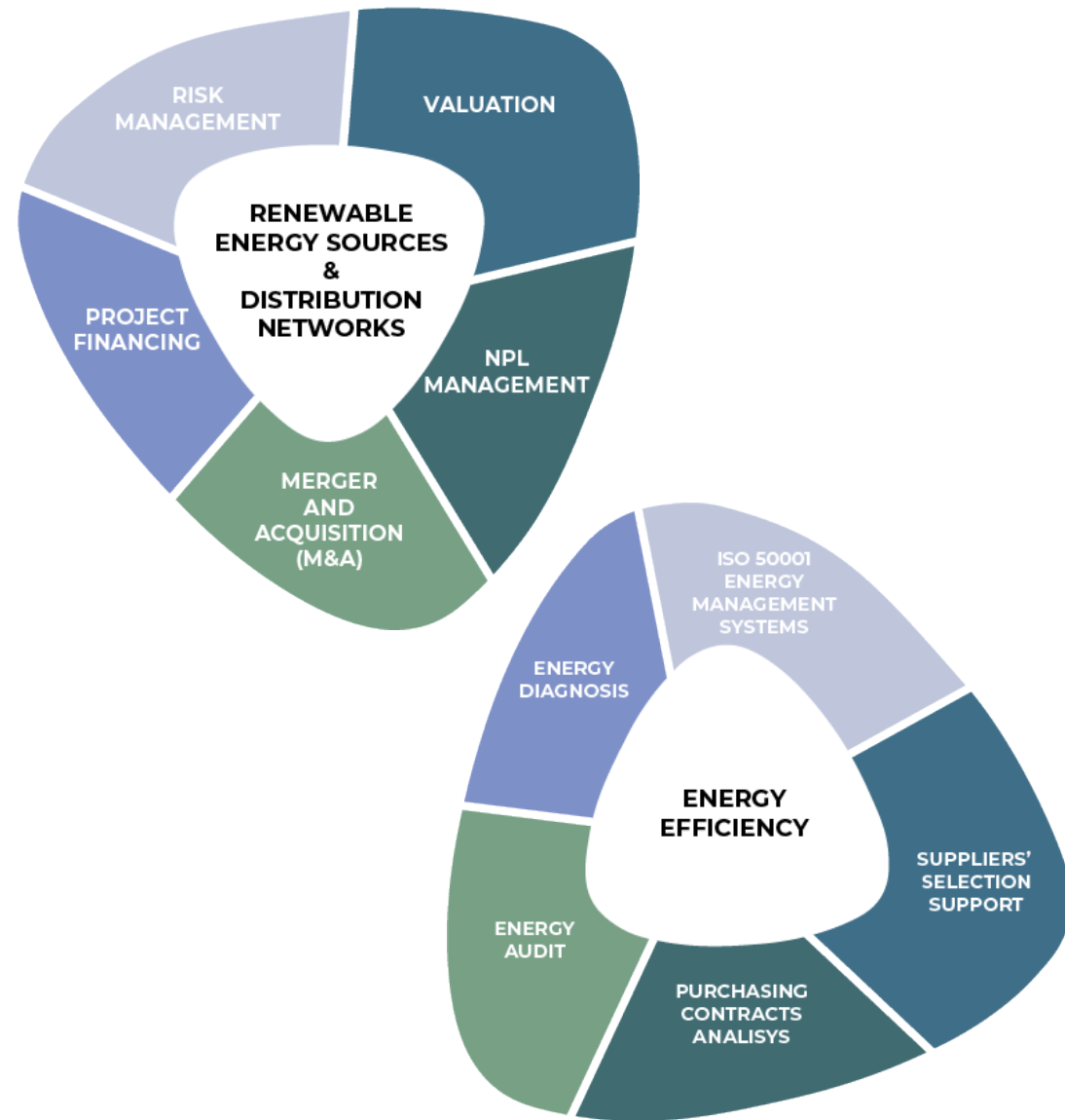
Our qualified professionals carry out advisory services for plants that produce electricity from renewable sources (over 1,500 plants, including photovoltaic, hydroelectric, wind, bioenergy), with a total nominal power of over 3 GW.

Thanks to our know-how in the areas of project financing and renewable energy, we are experts in the development of environmental sustainability projects working closely with major banks.

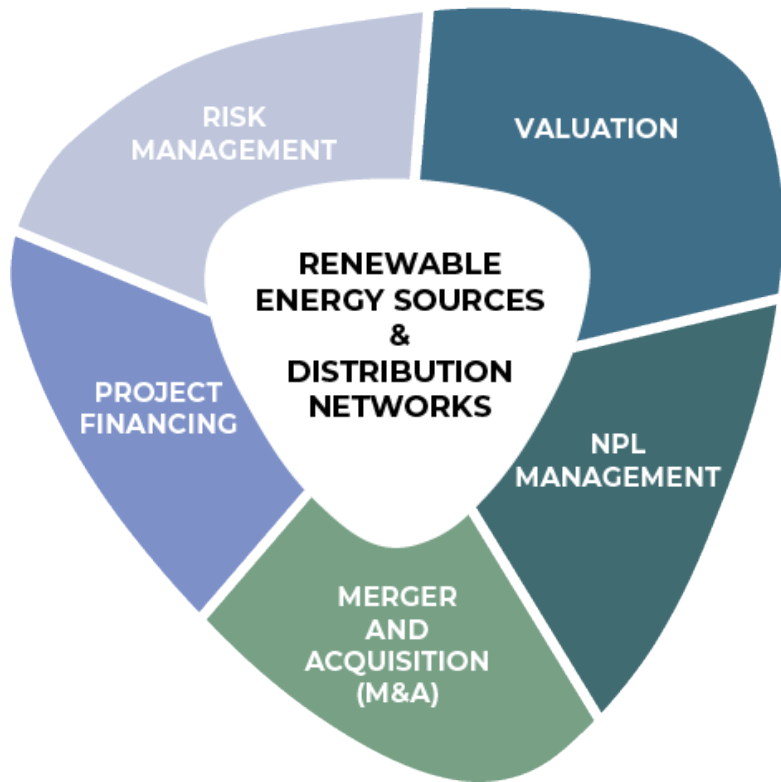
Our consulting approach, strengthened by our technical advisory experience, has allowed us to acquire additional expertise in the field of Project Financing operations in Waste Management, biofuel production, infrastructure and energy efficiency.

PRAXI is also an Independent Real Estate Fund Expert with exclusive investments in renewable energy.

PRAXI applies RICS international valuation standards, and its structure includes Professional Members of RICS (Royal Institution of Chartered Surveyors).

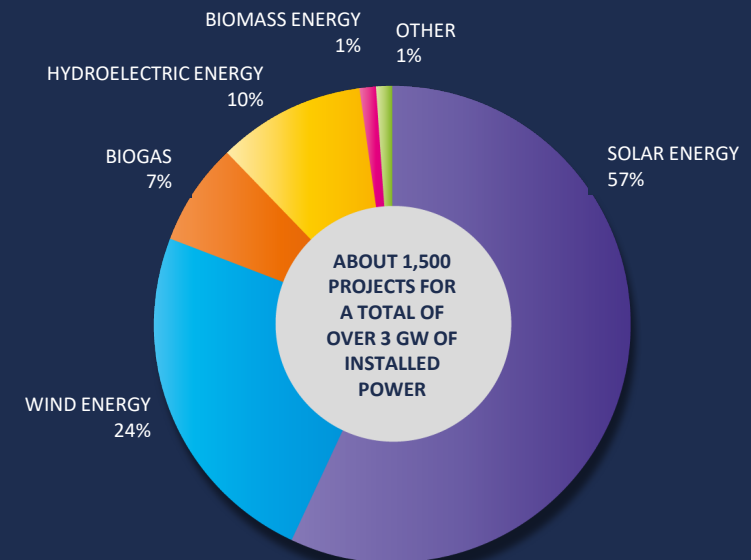


# Technical Advisory for RES plants

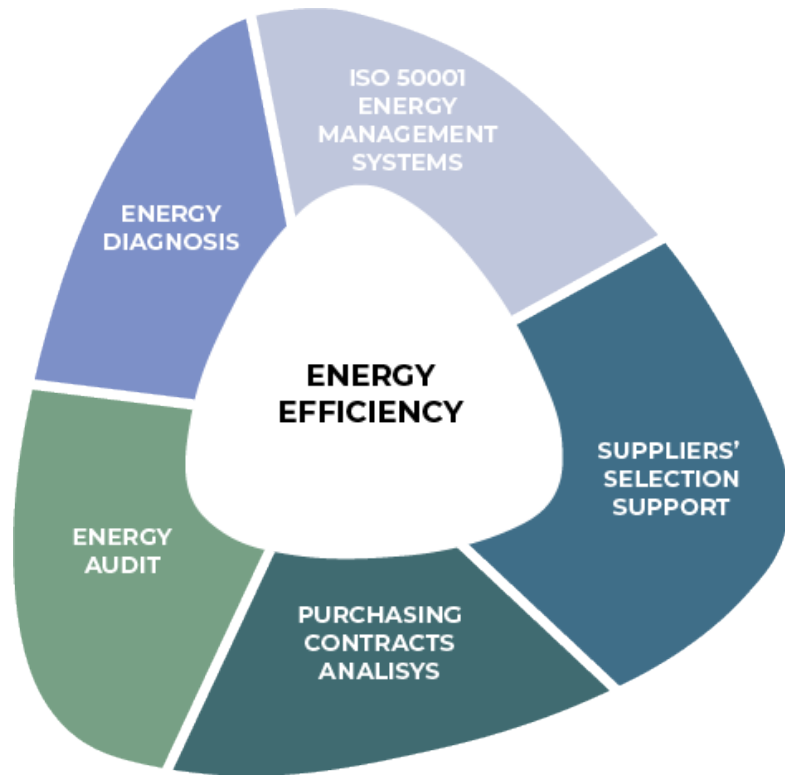


At PRAXI Energy, we offer a wide array of services which include the following:

- Technical, economic and financial analysis for credit institutions
- Evaluation and estimation of the value of RES plants
- Independent expert advisory on investment funds specialized in renewable energies
- Advisory on NPL, UTP: analysis, evaluation, technical advisory, BP drafting; Due Diligence related to portfolios of renewable energy plants
- Technical assistance on M&A operations of RES plants
- Technical advisory for Project Financing operations in the RES field
- Technical advisory on RES plants
- Advisory for plants producing biofuels
- Advisory for district heating plants and networks
- Preliminary verification on "GSE" controls
- Onsite instrumental verifications on photovoltaic plants



# Energy Efficiency Advisory Services



- Energy diagnosis in accordance with UNI CEI 11339:2009
- Energy audits: in-depth and continuous analysis of energy systems
- Assistance for ISO 50001:2018 certification
- Personalized Energy Management services, including assistance to the company's internal Energy Manager or the performance of Energy Manager activities
- Analysis of contracts for the supply and sale of energy
- Analysis of contracts for financing through third parties (FTT)
- Technical-economic and feasibility analysis of energy efficiency interventions and risk assessment
- Technical and administrative due diligence and GSE compliance audit
- Technical-economic analysis related to the installation of RES plants



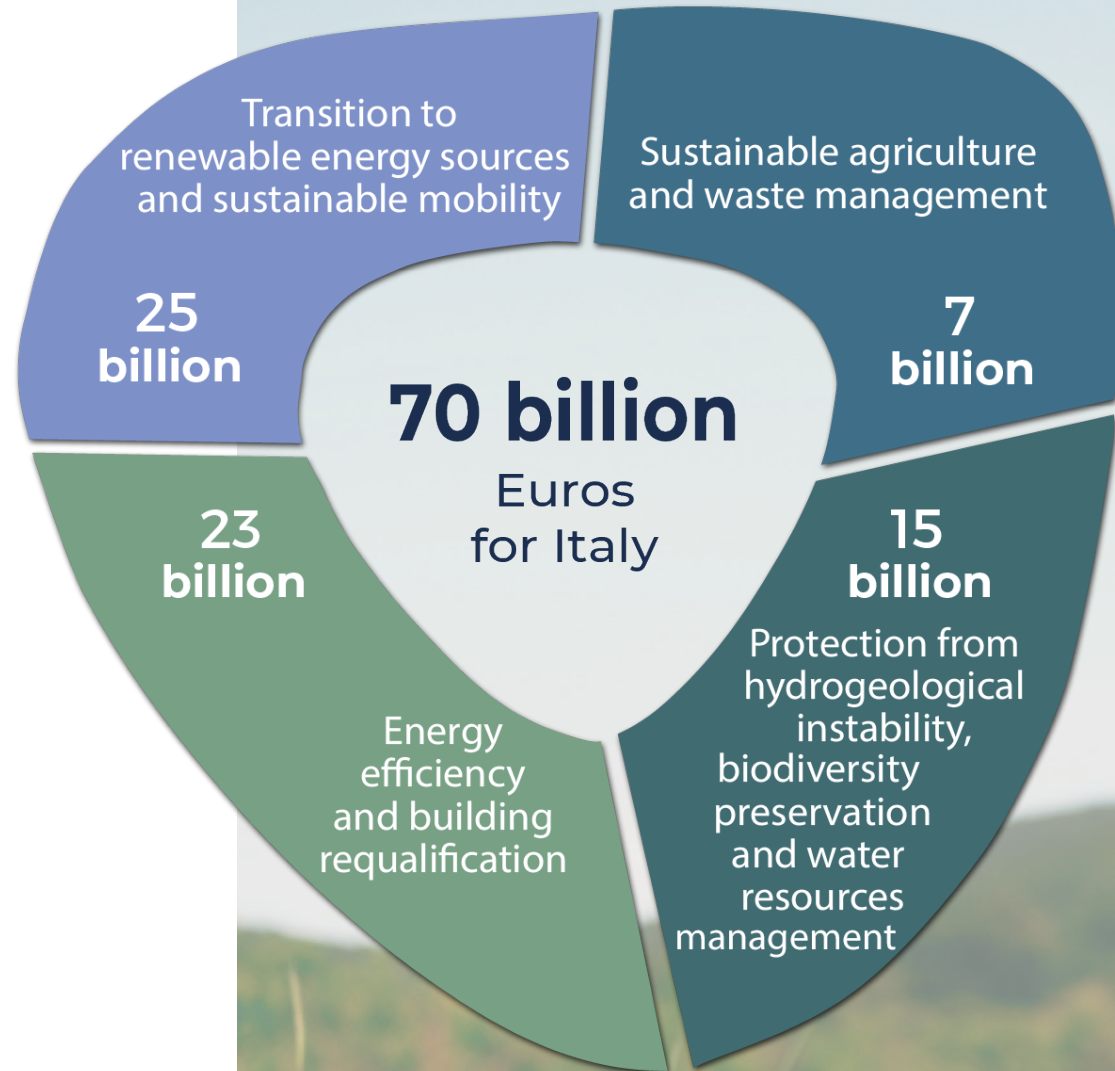
PRAXI Energy has highly qualified and certified professionals (Energy Management Experts - EGE) in accordance with UNI CEI 11339:2009.



We apply RICS international valuation standards, and our structure includes Professional Members of RICS (The Royal Institution of chartered Surveyors).

# NextGenerationEU (NGEU) for Italy

Green revolution and ecological transition



# PRAXI Group



**PRAXI S.p.A. – MANAGEMENT & CONSULTING**

Bologna Florence Genoa Milan  
Naples Padua Rome Turin Verona

[www.praxi.praxi](http://www.praxi.praxi)



**INTELLECTUAL PROPERTY**

**PRAXI INTELLECTUAL PROPERTY S.p.A.**

**Industrial and Intellectual Property Consulting**

Turin Civitanova M. Genoa Milan Padua  
Rome Savona Trento Verona

[www.praxi-ip.praxi](http://www.praxi-ip.praxi)



Worldwide Executive Search

[www.praxialliance.praxi](http://www.praxialliance.praxi)



Global Independent Advisers

[www.praxivaluations.praxi](http://www.praxivaluations.praxi)



**Global Sales Performance Improvement**

London Singapore

[www.consalia.com](http://www.consalia.com)



# PRAXI Energy Advisory

## Contacts

### Enrico Vissio

Partner e Responsabile B.U. PRAXI Energy  
PRAXI S.p.A. – Management & Consulting  
M +39 334 6186501 - T +39 011 6560  
enrico.vissio@praxi.praxi

Bologna | Florence | Genoa | Milan | Naples  
Padua | Rome | Turin | Verona

[www.praxi.praxi](http://www.praxi.praxi)

